

## What to check when [Error code: 50] occurs.

Update date: Mar.19<sup>th</sup>, 2021

The [Error Code: 50] message appears when GC reads one of the wrong DC voltage on Main board or APC board (refer to Figure 1). This error is usually caused by the wrong AC supply voltage that is out of the normal operation range between 220-240 VAC. This service note explains what to check when this [Error Code: 50] occurs.

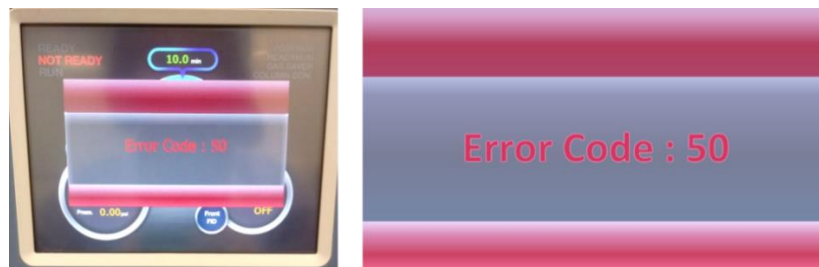


Figure 1. [Error code 50] alarm

1. As shown in Figure 2, check the AC voltage supplied to GC if it is the normal range (around 210-230 VAC).

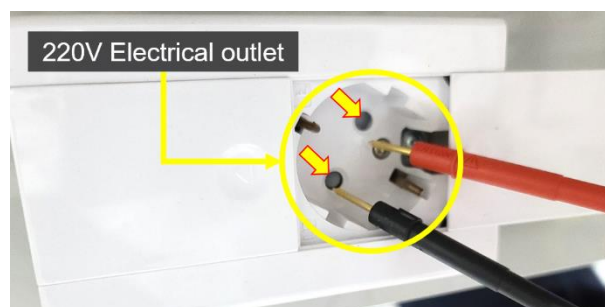


Figure 2. AC voltage measurement with DVM

- 1-1. When the voltage supplied to the GC is higher or lower than the normal range, the supply voltage must be adjusted.  
*\*e.g. install the Automatic Voltage Regulator (AVR) or Uninterruptible Power Supply (UPS) system is recommended.*
- 1-2. When the voltage supplied to the GC is within the normal range, you need to check which power supply has a wrong voltage.

## Service Note



2. Loosen four screws to open the right side and rear side of GC cover (Figure 3).



Figure 3. Open the GC cover to access the mainboard

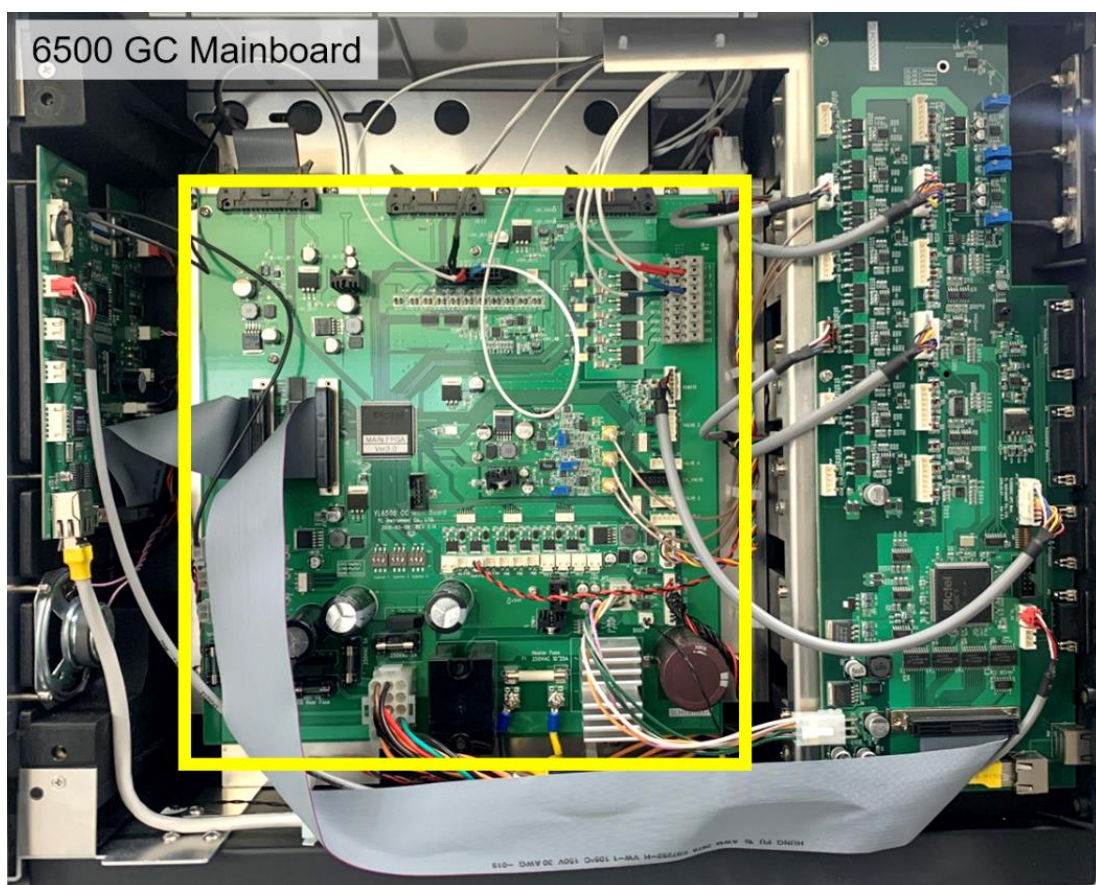


Figure 4. Mainboard of the YL6500 GC



## Service Note



3. Measure each testing point with DVM to check what AC voltage is measured from Transformer on the GC mainboard. Place the probes of DVM on each pair of wires with the same arrow color (as shown in Figure 5) and measure the AC voltage.

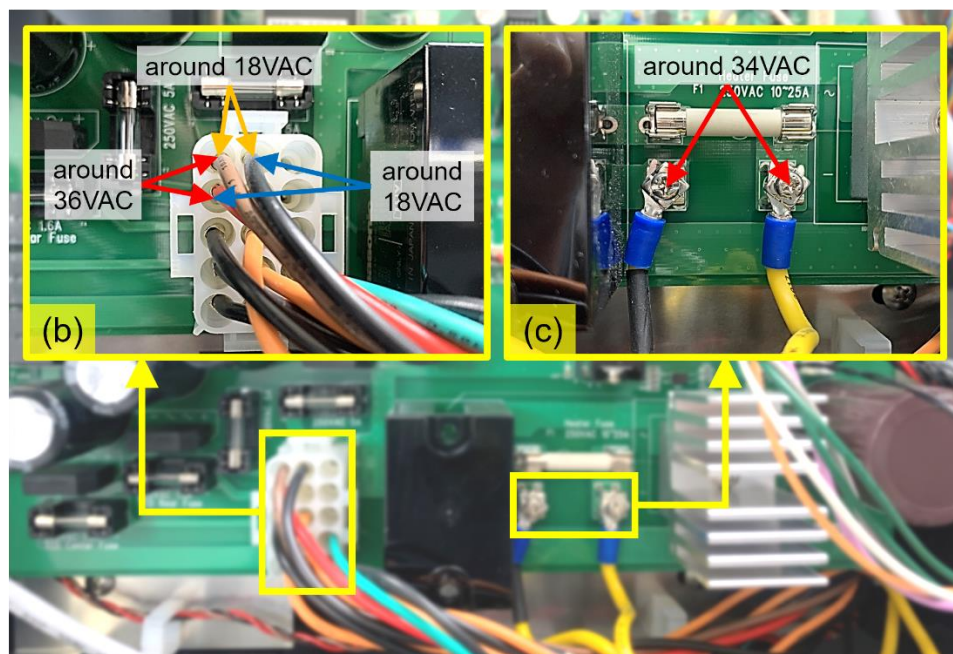
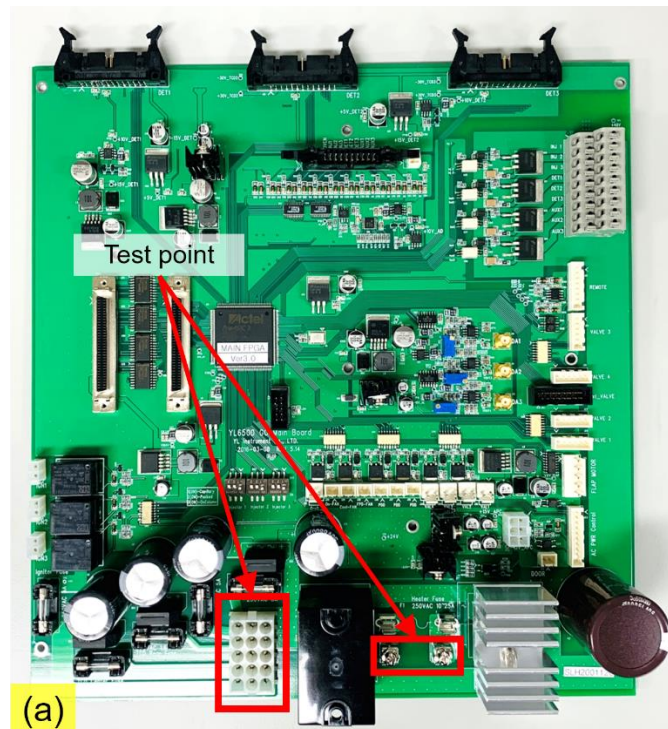


Figure 5. Test point to locate where the wrong AC voltage. (a); indicate the test point on the mainboard, (b); red arrow (brown and red)≈36 VAC, yellow arrow (brown and black)≈18 VAC, blue arrow (black and red)≈18 VAC, (c); red arrow≈34 VAC

## Service Note



4. In case that wrong AC voltage is measured, the transformer should be replaced with the new one.
5. If the voltage at all test points is measured to the normal range, check which voltage is wrong from GC LCD.
6. Touch the LCD panel of GC and follow the steps in Figure 6.  
*\*If some wrong voltage is measured, [Fail] appears, otherwise [Pass] is displayed.*



Figure 6. AC power diagnostic method for the YL6500 GC

## Service Note



7. When there is wrong voltage measured (Fail), the Main board or APC board should be replaced with the new one depending on where Fail appears.  
(Main Board: P/N 6501137070, APC board: P/N 6501137010)